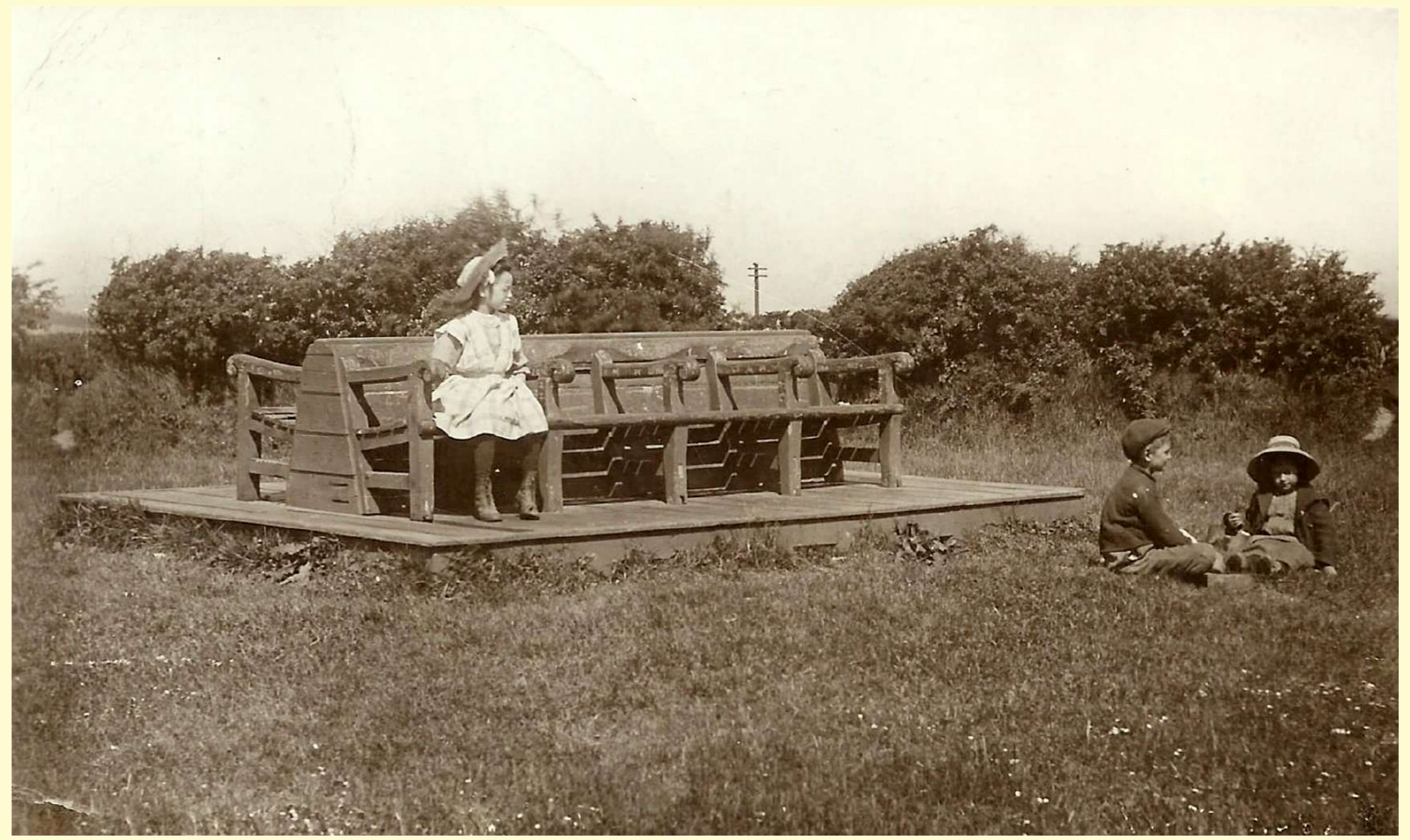


2 - In memory of her father; North's Seat erected in 1870



In 1870 Mr G E Jones constructed an Oak seat on Fairlight Down "double seated with floorboards and large enough to accommodate upwards of a dozen persons" it bore the inscription "Frederick North his seat". The press noted "this long needed convenience" was provided by "the thoughtfulness of a loving daughter" [Marianne]



A replacement seat in the early 1900's appears on several postcards of the period which suggests it was a popular spot with visitors.



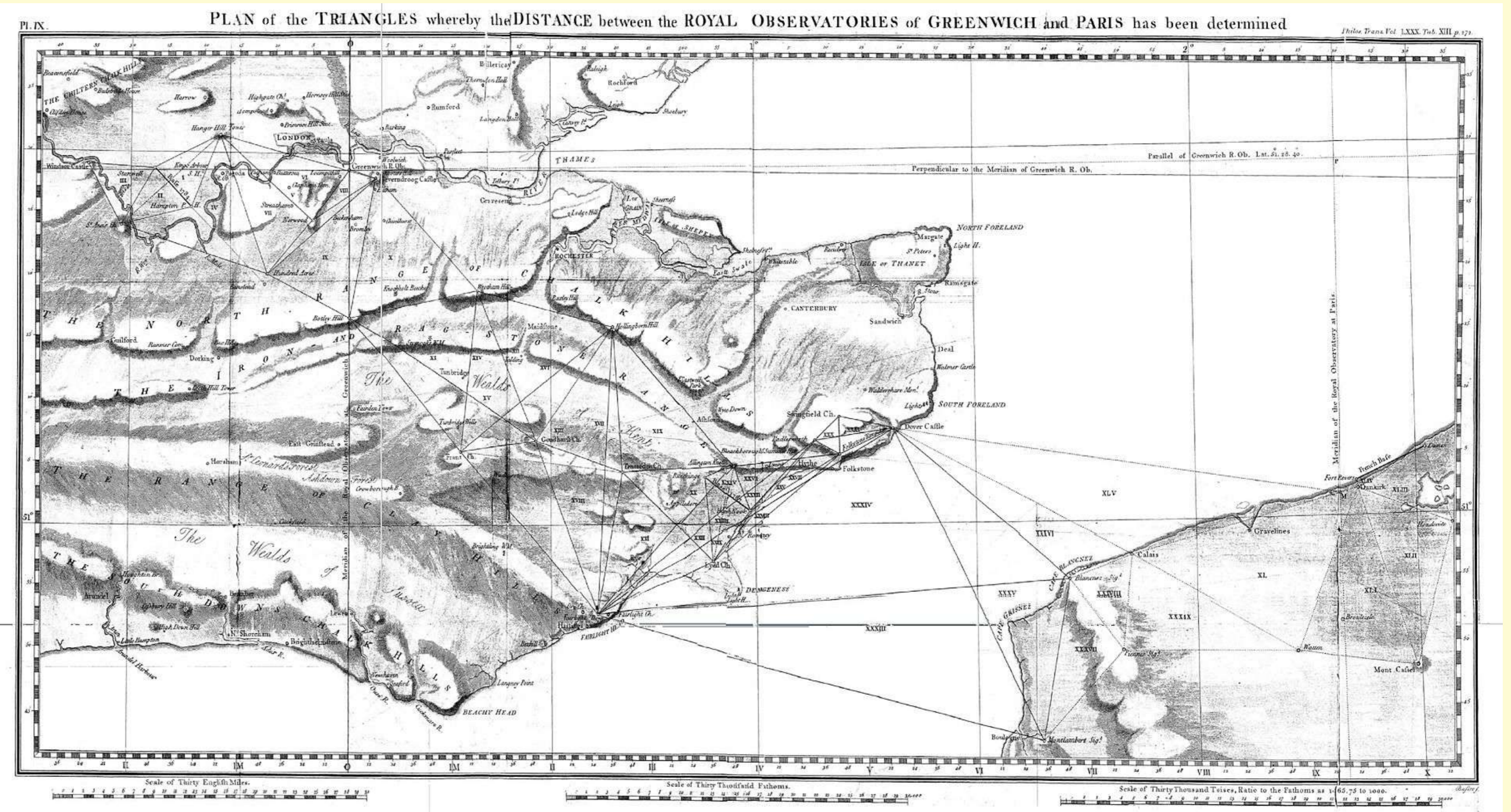
A later postcard shows that two standard corporation benches that were used on the parade and all over town were in use. A Plaque presented by Mr E W Amore was fitted to the top of the post.



A viewing platform replaced the seats about 1930 and the directional plaque was transferred to the tower. The tower was damaged by vandals in 1982 and removed as it was considered dangerous.



A later directional plaque presented by Mr Leslie Crew in 1959 was stolen in 1982 but recovered in Essex a year later. It is mounted on a natural stone base and the only remaining reminder of North's Seat; so often incorrectly called North Seat by people who assume it to be purely a compass reference.



In 1765 Major General William Roy became Surveyor-General of Coasts, his work formed the basis of the Ordnance Survey maps still produced today. The Hastings and St Leonards Observer - Saturday 28 August 1880 reported:- "Fairlight, being the highest land on the coast, of Sussex, was chosen by General Roy as a station, while making his survey for determining the relative situation of the observatories of Greenwich and Paris. Among the furze, and close to site of the mill which was some few years since destroyed by fire, is the highest spot on the Down, the elevation being 599 feet above the level of the sea. The different objects which may be seen from this elevated spot have been thus enumerated :- Thirteen towns, viz, Hastings, St. Leonards, Bexhill, Eastbourne, Hailsham, Winchelsea, Rye, Romney, Lydd, Hythe, Ashford, Tenterden, and Battle; sixty seven churches; five ancient castles; three bays; villages innumerable; Dover and Rye harbours; Dungeness lighthouse; and two monumental towers, one at Boulogne, and one at Heathfield."

