



# 5 - Brazil 1872-73

"For the next two months I enjoyed the society of my friends in London, and then began to think of carrying out my original plan of going to Brazil, to continue the collection of studies of tropical plants which I had begun in Jamaica. I started in the Neva Royal Mail Ship on the 9th of August with a letter from Mr. R. Gr. to the captain. I had a most comfortable cabin, quite a little room, with a square window, and the voyage was most enjoyable." The Neva's was built in 1868 as a mail ship and its departure was reported in the Morning Post. Specie (see below) refers to money in coins, rather than in notes or bullion.

(Reuter's Telegrams.)

SOUTHAMPTON, FRIDAY.

The Royal Mail Steam Packet Company's royal mail steam-ship Neva sailed hence at three this afternoon with the Brazilian and River Plate mails, 94 passengers, and a general cargo, including £250,000 in specie.



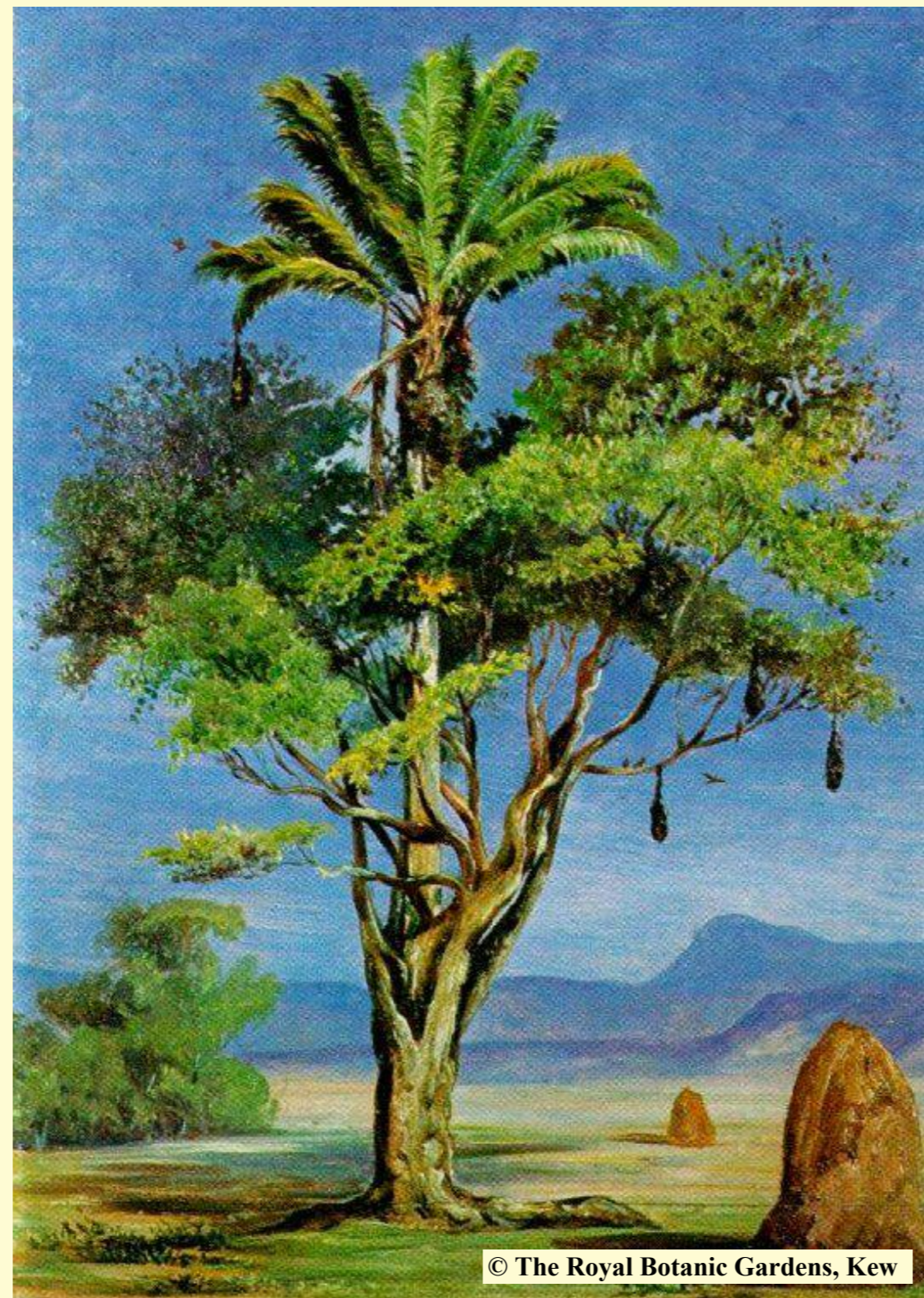
View from the Sierra of Petropolis looking towards the Bay of Rio and its islands



The Sugarloaf Mountain in the distant background and a climbing plant, *Strophanthus gratus* in the foreground. A Royal Palm stands to the left



Angels Trumpet flowers and humming birds



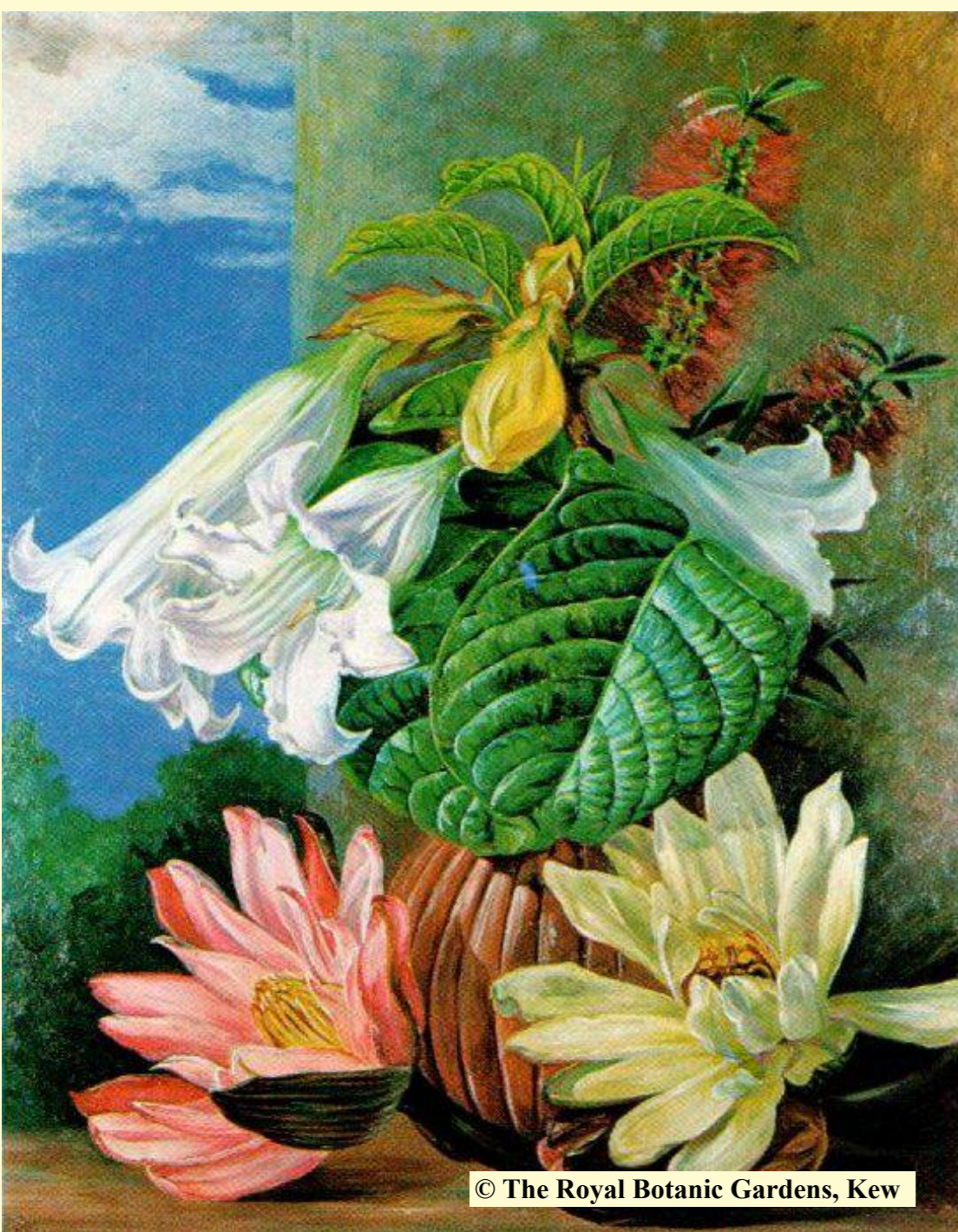
A Palm surrounded by the Strangler Fig Tree which will ultimately kill it



The Coral Tree in flower



The avenue of Royal Palms at Botofogo



Cultivated flowers from the Botanical Gardens in Rio de Janeiro



A Brazilian climbing plant which has an unpleasant smell



The Flannel Flower so called because of the wooly surface to some parts of the plant



Poinsettia or Christmas Flower. Grown as a pot plant in the UK and on sale at Christmas. The cultivated variety is particularly grown for its leaves which all turn red.



LOTTERY FUNDED